

# (201)

PART OF THE USA TODAY NETWORK

TIME FOR THE BIG REVEAL OF THE

# 15<sup>TH</sup> ANNUAL

# BEST OF BERGEN

I S S U E

FEATURING OVER 500 OF THE BEST PLACES TO EAT, DRINK, PLAY AND MORE



# home



## ALLENDALE KITCHEN

BRONZE AWARD: RESIDENTIAL LARGE KITCHEN

DESIGNER: SHARON SHERMAN  
THYME & PLACE DESIGN IN WYCKOFF



The client is an avid cook, and always dreamed of a kitchen with an island, professional-level appliances and a perfect place for everything a cook could need, says Sherman. To achieve this, Thyme & Place removed the inefficient cabinet storage, appliances that needed to be replaced and the drop ceilings that limited the height of the upper cabinets. "This allowed us to use taller cabinets with a combination of crown moldings to add an additional dimension to the cabinet design," she says. The refrigerator wall now contains a pull-out pantry, double wall oven and Sub-Zero refrigerator. All of the cabinets are accessorized with specialized storage options. Decorative clear lights provide plenty of illumination for the island but don't block the view of the trendy wood hood above the oven. Custom glass tile in the niche provides a signature touch.

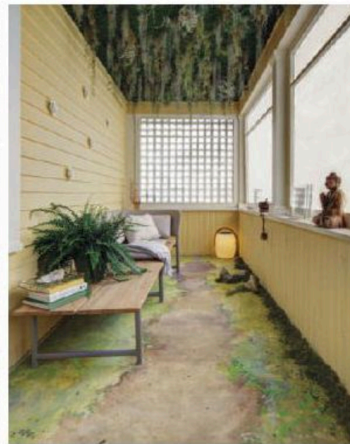


## NORTH CALDWELL LIVING ROOM

BRONZE AWARD:  
RESIDENTIAL SINGLE SPACE

DESIGNER: TERRI FIORI  
FIORI INTERIOR DESIGN IN WYCKOFF

Fiori says she envisioned this living room as a place where her clients could convene with friends after dinner for conversation — a place to reflect on their worldwide travels. "The design inspiration started with the two custom Japanese dolls that the clients brought back from a trip to Kyoto," she says. "I used the colors in their multi-layered robes as the color inspiration. The embroidered fabric for the ottoman was chosen as an important accent in the room that pulls in all the colors from the doll's robes." The velvet chaise is tucked away in the corner of the room and becomes a quiet spot to relax with a book. All fabrics, including the custom rug, were treated to prevent stains and spills. "I loved designing this room because of the story that it tells," says Fiori, "especially during these days when [we] are not able to travel."



## MEDITATION ROOM IN PLAINFIELD SHOW HOUSE

SILVER AWARD:  
RESIDENTIAL SHOW HOUSE SPACE

DESIGNER: MARINA V. UMALI, MARINA V DESIGN STUDIO IN RIDGEWOOD



To turn a small former dressing room and attached sleeping porch into a soothing, inspirational meditation space, Umali incorporated Zen music, aromatherapy, soothing colors, crystals, custom artwork, fresh flowers and a ceiling that was literally alive with plants. "I wanted to bring the outdoors in and create a place of liveliness, freshness and most importantly, peace," says Umali. She integrated elements of Feng Shui into the design by creating an altar-like space above the steps where guests could write down negative thoughts and throw them in a bowl of water to dissolve. Visitors to the show house had reason to feel positive, though: Proceeds from their visits to the Grace's House fundraiser went to support the non-profit Valerie Fund. ■

